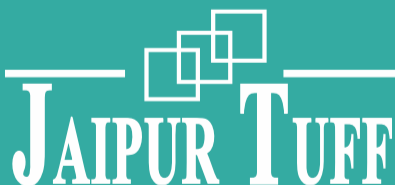

SWITCHABLE SMART GLASS



Scan code for more details

An Overview_____

JAIPUR TUFFEN GLASS INDUSTRIES PVT. LTD.
Jaipur-22 (India)

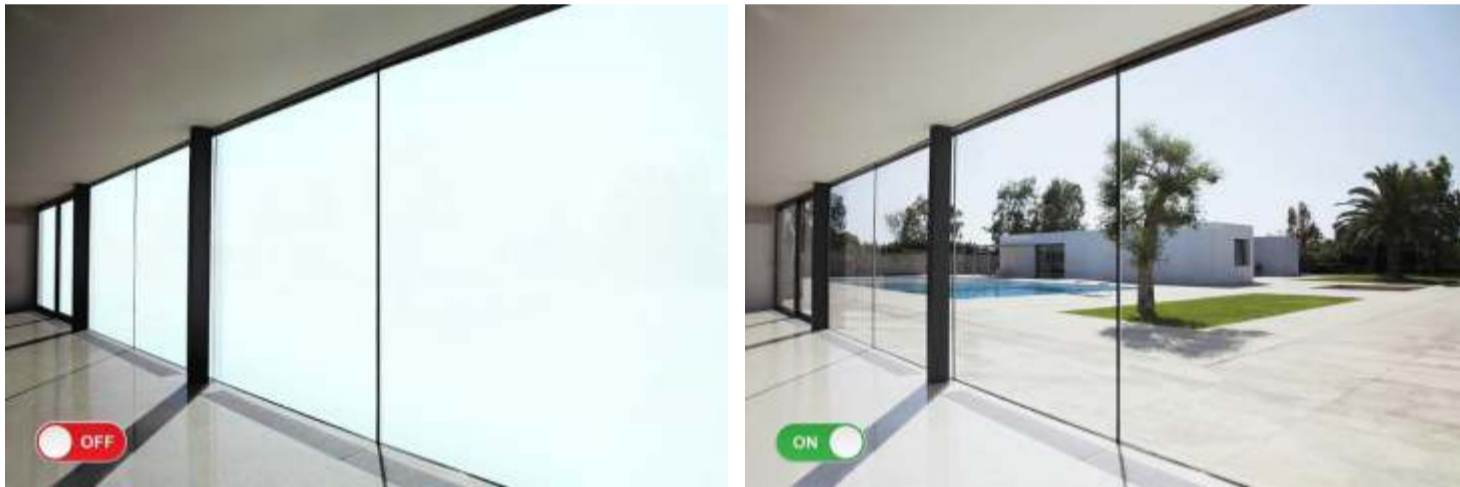


JAIPUR TUFF
Glass! Changing the Perception

The logo features the company name 'JAIPUR TUFF' in a bold, serif font. Above the letters 'I' and 'U' are three overlapping squares of increasing size. Below the name is the tagline 'Glass! Changing the Perception' in a smaller, sans-serif font.

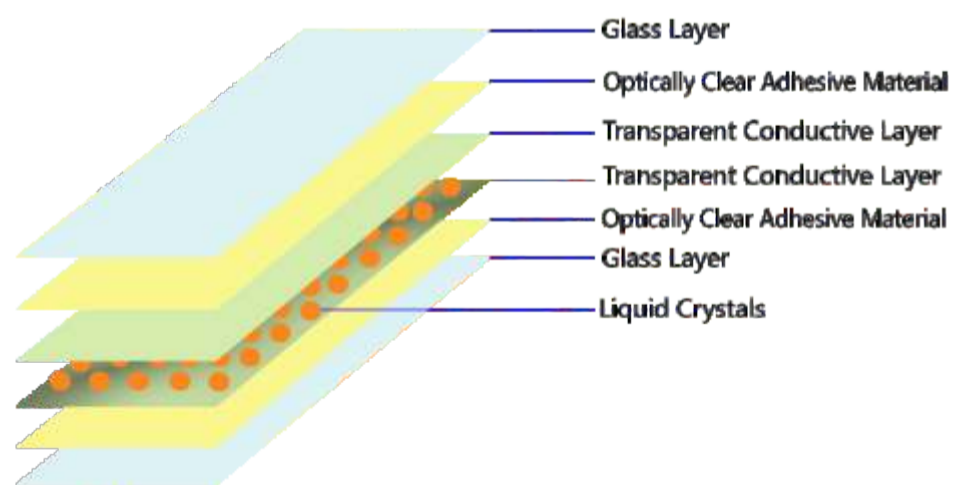
Smart Switchable Glass

Instant Privacy:



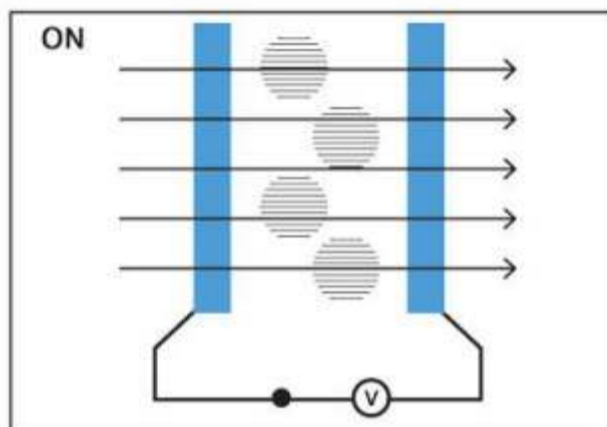
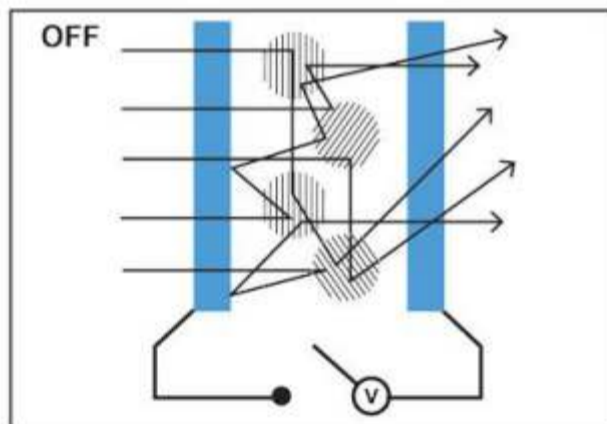
Switchable glass, as its name suggests, is operated by a simple electrical switch, controlling the opacity of the glass from clear to translucent. It can easily be integrated into automation systems too, giving you even more control (Like remote controlling, sensor controlling, Smart devices like Amazon Alexa/Google Do It controlling, Mobile Phone Controlling, etc).

Design and Working Principle of Smart Glass:



When we apply the electromagnetic field at transparent conductive films, it forces liquid crystals to align in one direction and resultant light start passing through the glass or we can say glass becomes clear.

In the absence of the electromagnetic field, the liquid crystals become random and distort the passing light, resultant glass becomes opaque.



Other features of the smart glass:

We offer a great range of switchable glass and manufacture the needs of tones of architects, interior designers, retailers, office fit-out companies, glass processors, partitioning firms and more, worldwide. Our smart glass is manufactured using a special factory process i.e. used in bulletproof glass manufacturing by world's best LISEC Lamination Technology.

It does not only provide instant privacy but also some extra features like:

Security from burglary.

- Solar and thermal insulation.
- UV protection.
- Sound control.

Why Jaipur Tuff's smart glass is different from others?

We manufacture the smart glass by using the world-class Lisec automatic manufacturing machinery, that enables not only the accuracy in manufacturing but also great quality.

Secondly, we are the first manufacturer in India of the smart glass and we are only in the world who have achieved haze 3% and light transmittance of 85% in the PDLC film.

Technical Data of Smart Glass.

Thickness: Customized between 9mm to 30mm

Operation Mode: Power On: Transparent / Power off: Opaque

Maximum size: Width: 0-1.5 meters / Length: within 3meters.

Color: White clear, blue, pink, yellow, red, black, etc.

Control mode: Switch control, remote control, voice command control, Wi-Fi internet control, cell phone control, long distance control.

UV Block: More than 98%

Sound Control: Up to 36dB

Operating Temperature: -20°C ~ 60°C (-4°F ~ 140°F)

Storage temperature: -40°C~ 60°C

Parallel Light Transmittance: 78 ± 2% (On) / 9 ± 1% (Off)

Sunlight Transmittance: 80 ± 2% (On) / 60 ± 3% (Off)

Haze: 4 ± 1% (On) / 92 ± 2% (Off)

Visible angle: 150°

Operating Voltage: 30V/48V /60v AC

Power Consumption: About 5-7W per sqm

Switching Speed: Less than 1 second

Working life: >10 years

Switch times: >2000000 times

Other Products

- Fire Rated Glass
- Toughened Glass
- Laminated Glass
- Insulated Glass (DGU)
- Extra Clear Glass
- Mirror
- Bend Toughened Glass
- Lacquered Glass
- Ceramic Printed Glass
- Designer Glass



SOME OF THE CREATIVE SOLUTIONS

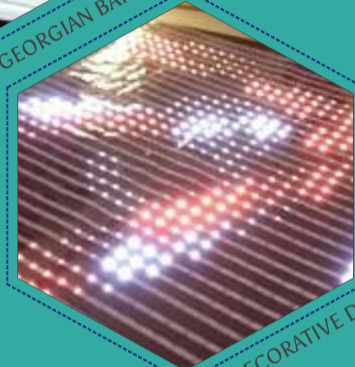
- Georgian Bar Integrated DGU.
- Integral Blind Insulated Glass.
- LED Integrated Decorative Glass.
- Fabric Integrated Laminated Glass.
- OLED-Ink Screen Printed Decorative Glass.



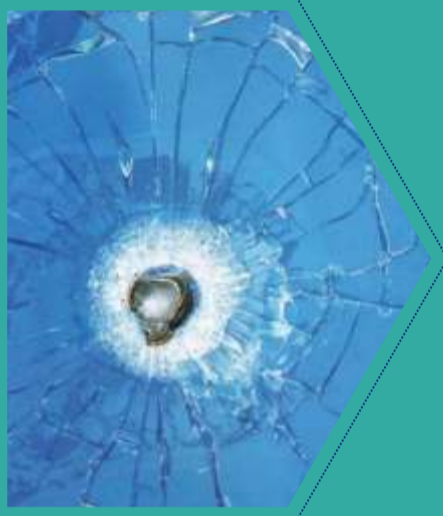
GEORGIAN BAR DGU



INTEGRAL BLIND DGU



LED DECORATIVE DGU



JAIPUR TUFF
Enabling the bullet
protection up to
UL 752 Level 7



OUR SUPPLIERS



Jaipur Tuffen Glass Industries Pvt. Ltd.

E-2285 (C), Ramchandrapura Industrial Area, Sitapura Extention, Jaipur-302022 (Raj.)

✉ mail@jaipurtuff.in 🌐 www.jaipurtuff.in

☎ +91-9529926282 📞 +91-9529926284

